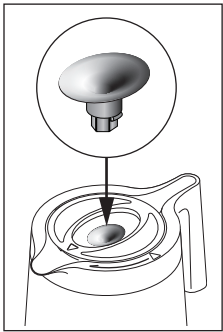


# IMPORTANT CLEANING INSTRUCTIONS BTC

This BUNN® THERMAL CARAFE will last a very long time if properly used and cared for.  
• Stainless Steel • Seamless • 10 Cup Capacity • Easy To Use •

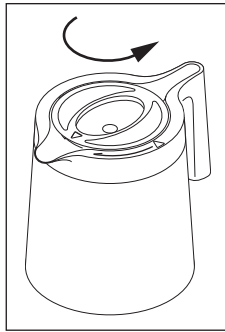
## CARAFE CLEANING

**NOTE:** For best results, do not clean lid in dishwasher.



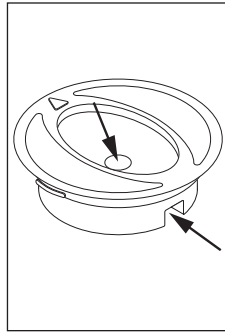
STEP 1

Remove the Brew-through valve by lifting at the edge and pulling up. Do **NOT** use a sharp object (but you can use a butter knife). Wash the Brew-through valve with soapy water.



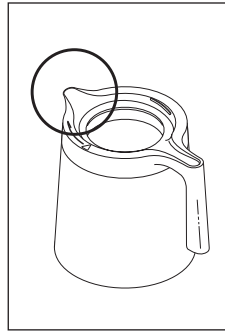
STEP 2

Remove the lid by rotating counterclockwise and lift from carafe.



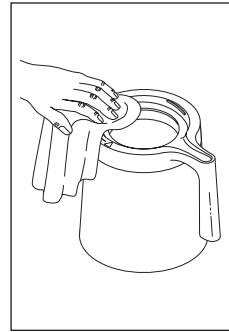
STEP 3

Wash the lid thoroughly. Pay particular attention to passage between the two areas indicated by arrows. Use included brush to clean this area.



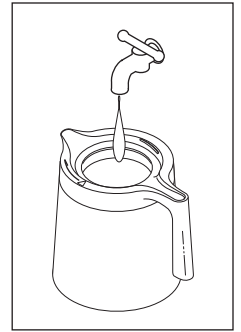
STEP 4

Occasionally, scrub the carafe pour spout and the area around it, including the lid, with a mild detergent and warm water.



STEP 5

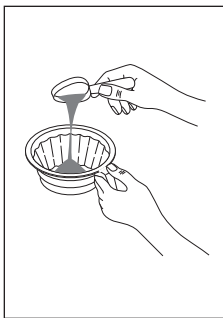
Use a soft cloth and scrub hard. Be sure to remove all residue.



STEP 6

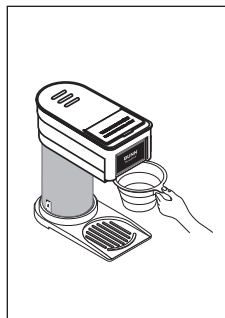
When finished, pour out solution into sink and thoroughly rinse carafe and lid with clean water.

## PERIODIC CARAFE CLEANING. Perform as necessary.



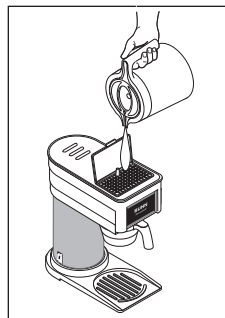
STEP 1

Place a filter into the brew funnel. Place two level teaspoons of Cascade® dish-washing detergent into the filter.



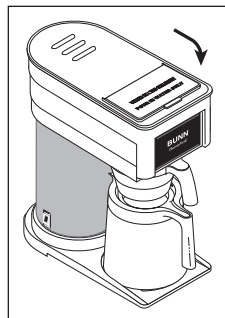
STEP 2

Insert the brew funnel into the brewer.



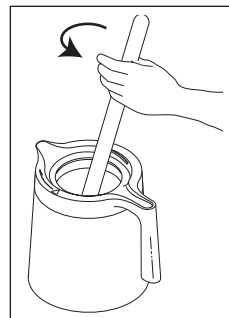
STEP 3

Raise the hinged flip lid and pour one carafe of water into the top of the brewer. Do not close the lid yet.



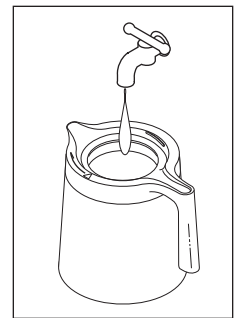
STEP 4

Without installing the carafe lid, place the open carafe into the brewer, **THEN** close the lid. After "brew" cycle stops, allow the carafe to soak for 10 - 15 minutes.



STEP 5

Use a long handled brush to scrub the carafe inside and out as necessary. Use **EXTREME CAUTION** during this step as the cleaning solution is **VERY HOT**.



STEP 6

Discard the paper filter and rinse both carafe and funnel very well.