

Cold Beverage Systems

Cold beverage dispenser with patented High Intensity mixing chamber delivers superior drinks consistently



JDF-2S
(Juice display)



JDF-2S
(Iced Coffee display)

PRODUCT FEATURES

- One dispenser delivers both frozen and ambient products.
- Quick dispense with 44.4 to 59.2 ml per second flow rate.
- 20.8 cm cup clearance accommodates most juice containers.
- 4.5 kg ice bank assures cold product.
- Drink consistency and quick dispense assured by the High Intensity® mixing chamber's "stay clean" valve design.
- Pumps and mixes 4:1 high viscosity and 5:1 juices accurately and consistently.
- Advanced concentrate pump designed for easy setup, accuracy and durability.
- Equipped with tank drain.
- Dual dispense allow simultaneous dispense from both dispense heads (juice display only).

RELATED PRODUCTS



EQHP-10
Product No.: 39000.0004

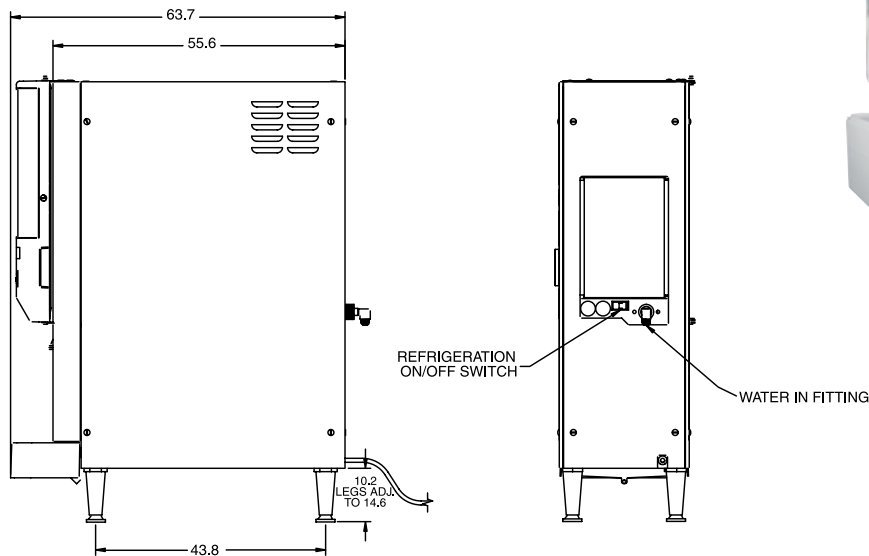


EQHP-10L
Product No.: 39000.0001

Refillable juice container
Product No.: 39302.0000
(sold separately)

Ambient concentrate conversion kit
Product No.: 33699.0001
(sold separately)

Inlet Hose Assembly
Product No.: 32865.0002



*24°C incoming water for 190 drinks without exceeding 4.4°C finished drink temperature.

Cold Beverage Systems

Product #	Description	Shipping Weight	Electrical					Cord	Agency
			Volts	Amps	Watts	Hertz	Phase		
NON-LIGHTED DOOR									
37900.0003	JDF-2SA, pushbutton	46.7 kg	230	4	920	50/60	1	Yes	CE (NSF)
37900.0007	JDF-2SA, pushbutton, iced coffee display								

Plumbing: 138-690 kPa. Machine supplied with 3/8" male fitting. All plumbed models that are CE listed feature backflow prevention.

Dimensions in centimetres. Other models may be available, please contact your BUNN Sales Representative. For capacities, additional specs, manuals, care & cleaning, visit www.bunn.com.

Cold Beverage Systems

Cold beverage dispenser with patented High Intensity mixing chamber delivers superior drinks consistently



JDF-2S LD
(Juice display)



JDF-2S LD
(Iced Coffee display)



JDF-2S PC LD
(Lighted door with portion control)

PRODUCT FEATURES

- One dispenser delivers both frozen and ambient products.
- Quick dispense with 44.4 to 59.2 ml per second flow rate.
- 20.8 cm cup clearance accommodates most juice containers.
- 4.5 kg ice bank assures cold product.
- Drink consistency and quick dispense assured by the High Intensity® mixing chamber's "stay clean" valve design.
- Pumps and mixes 4:1 high viscosity and 5:1 juices accurately and consistently.
- Advanced concentrate pump designed for easy setup, accuracy and durability.
- Equipped with tank drain.
- Three size portion control model available (juice only)
- Dual dispense allow simultaneous dispense from both dispense heads (juice display only).
- Lighted door.

RELATED PRODUCTS



EQHP-10
Product No.: 39000.0004

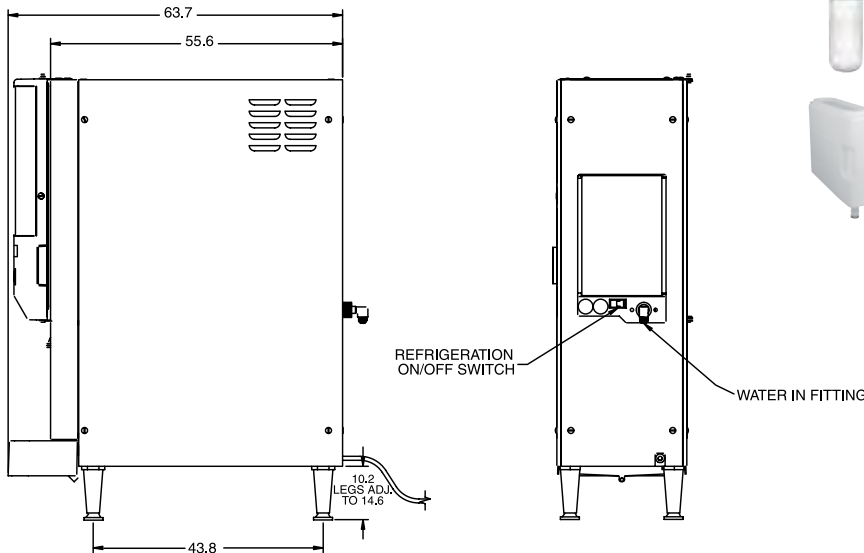


EQHP-10L
Product No.: 39000.0001

Refillable juice container
Product No.: 39302.0000
(sold separately)

Ambient concentrate conversion kit
Product No.: 33699.0001
(sold separately)

Product No.: 32865.0002



*24°C incoming water for 190 drinks without exceeding 4.4°C finished drink temperature.

Cold Beverage Systems									
Product #	Description	Shipping Weight	Electrical					Cord	Agency
			Volts	Amps	Watts	Hertz	Phase		
LIGHTED DOOR									
37900.0010	JDF-2SA, pushbutton	46.7 kg	230	4	920	50/60	1	Yes	CE (NSF)
37900.0011	JDF-2SA, pushbutton, iced coffee display								
37900.0017	JDF-2SA, portion control								

Plumbing: 138-690 kPa. Machine supplied with 3/8" male fitting. All plumbed models that are CE listed feature backflow prevention.

Cold Beverage Systems

Cold beverage dispenser with patented High Intensity mixing chamber delivers superior drinks consistently



JDF-4S
(Juice display)



JDF-4S
(Iced Coffee display)

PRODUCT FEATURES

- One dispenser delivers both frozen and ambient products.
- Frost-free refrigerated compartment holds up to 15.1 litres of frozen concentrate.
- 8.2 kg ice bank assures cold product.
- Drink consistency and quick dispense assured by the High Intensity® mixing chamber's "stay clean" valve design.
- Pumps and mixes 4:1 high viscosity and 5:1 juices accurately and consistently.
- Advanced concentrate pump designed for easy setup, accuracy and durability.
- Equipped with tank drain.
- Cold water feature on some models.

RELATED PRODUCTS



EQHP-10
Product No.: 39000.0004

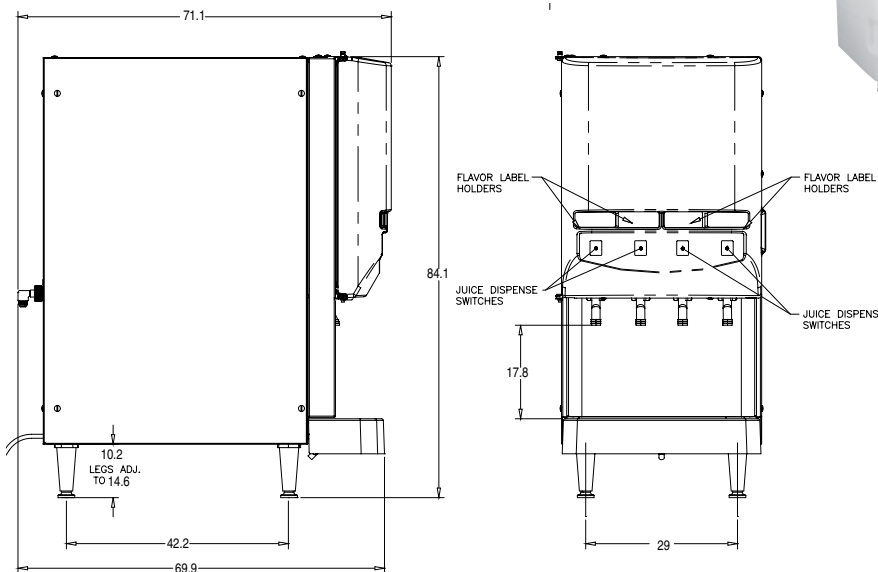
EQHP-10L



Refillable juice container
Product No.: 39302.0000
(sold separately)

Ambient concentrate conversion kit
Product No.: 33699.0001
(sold separately)

Inlet Hose Assembly
Product No.: 32865.0002



Cold Beverage Systems

Product #	Description	Shipping Weight	Electrical					Cord	Agency
			Volts	Amps	Watts	Hertz	Phase		
NON-LIGHTED DOOR									
37300.0001	JDF-4SA, pushbutton, juice display	58.5 kg	230	4	920	50/60	1	Yes	CE (NSF)
37300.0003	JDF-4SA, pushbutton, juice display, cold water dispense		230	4	920	50/60			CE
37300.0018	JDF-4SA, pushbutton, iced coffee display		230	4	920	50/60			CE (NSF)
37300.0021	JDF-4SA, pushbutton, iced coffee display, cold water dispense		230	4	920	50/60			CE

Plumbing: 138-690 kPa. Machine supplied with 3/8" male fitting. All plumbed models that are CE listed feature backflow prevention.

Cold Beverage Systems

Cold beverage dispenser with patented High Intensity mixing chamber delivers superior drinks consistently



JDF-4S LD
(Juice display)



JDF-4S LD
(Iced Coffee display)



JDF-4S PC LD
(Lighted door with portion control)

PRODUCT FEATURES

- One dispenser delivers both frozen and ambient products.
- Frost-free refrigerated compartment holds up to 15.1 litres of frozen concentrate.
- 8.2 kg ice bank assures cold product.
- Drink consistency and quick dispense assured by the High Intensity® mixing chamber's "stay clean" valve design.
- Pumps and mixes 4:1 high viscosity and 5:1 juices accurately and consistently.
- Advanced concentrate pump designed for easy setup, accuracy and durability.
- Equipped with tank drain.
- Cold water feature on some models.
- Three size portion control, lighted door models available. (juice only)
- Lighted door.

RELATED PRODUCTS



EQHP-10
Product No.: 39000.0004

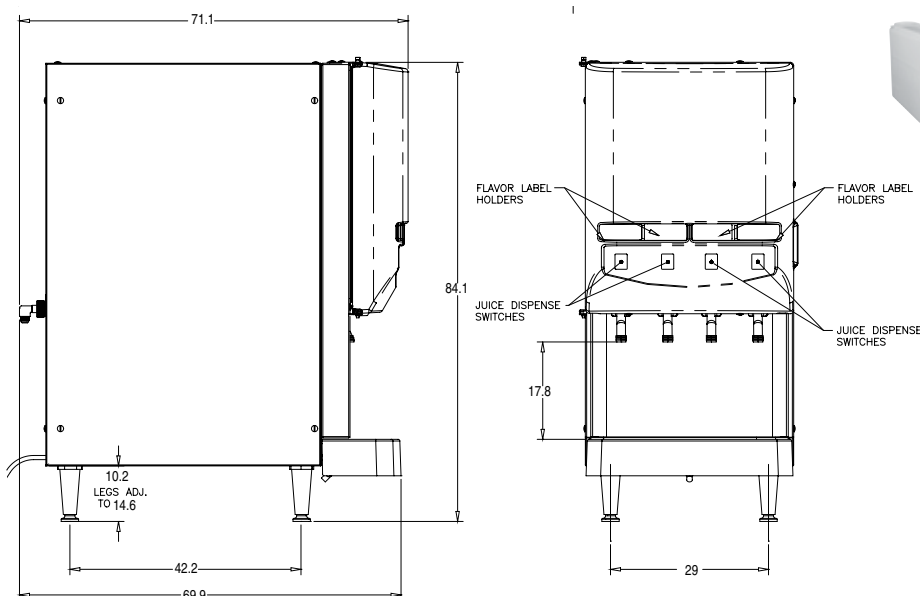


EQHP-10L
Product No.: 39000.0001

Refillable juice container
Product No.: 39302.0000
(sold separately)

Ambient concentrate conversion kit
Product No.: 33699.0001
(sold separately)

Product No.: 32865.0002



Cold Beverage Systems									
Product #	Description	Shipping Weight	Electrical					Cord	Agency
			Volts	Amps	Watts	Hertz	Phase		
LIGHTED DOOR									
37300.0005	JDF-4SA, pushbutton, juice display, lighted door	58.5 kg	230	4	920	50/60	1	Yes	NSF CE
37300.0007	JDF-4SA, pushbutton, juice display, lighted door, cold water dispense								CE
37300.0022	JDF-4SA, pushbutton, iced coffee display, lighted door								NSF CE
37300.0024	JDF-4SA, portion control, juice display, lighted door								

Plumbing: 138-690 kPa. Machine supplied with 3/8" male fitting. All plumbed models that are CE listed feature backflow prevention.

Dimensions in centimetres. Other models may be available, please contact your BUNN Sales Representative. For capacities, additional specs, manuals, care & cleaning, visit www.bunn.com.